



DOWNLOAD INSTRUCTION for EZCOMMAND LITE

Document #: 1.01

Rev: 1.0

Customer Service Departmental Document
Liquid Controls, Lake Bluff

Date: 02/11/13

Sales: Service:

Author: K. Kious


Page 1 of 6

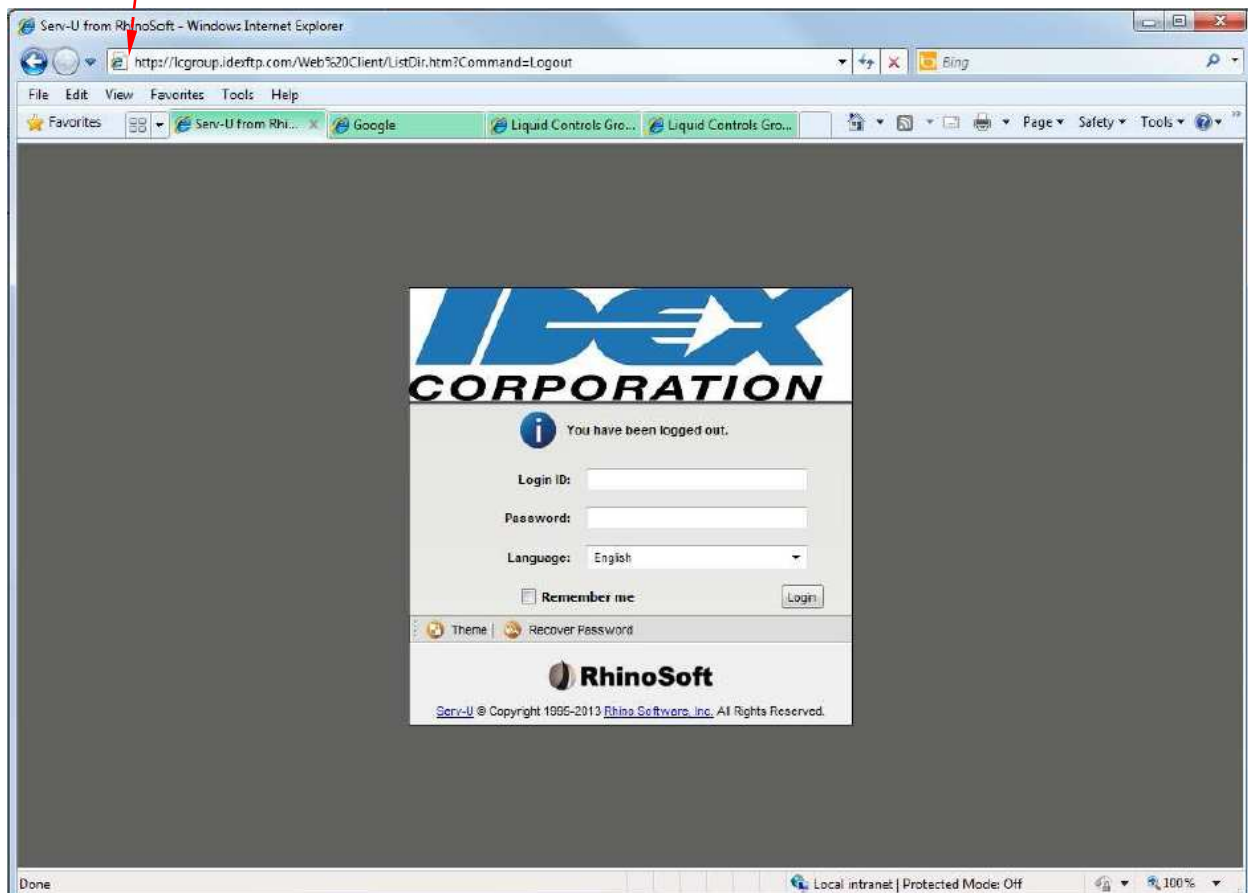
Policy: N/A

Procedure: N/A

Work Instruction:

Download EZCommand Lite Program

1. Start your Internet Explorer Browser
2. In the program line at the top of the page enter the following address - <http://lgroup.idexftp.com/>
3. Depress the ENTER key, or using the mouse, select the refresh button 
4. The address will open the following window:



DOWNLOAD INSTRUCTION for EZCOMMAND LITE

Document #: 1.01

Rev: 1.0

Customer Service Departmental Document
Liquid Controls, Lake Bluff

Date: 02/11/13

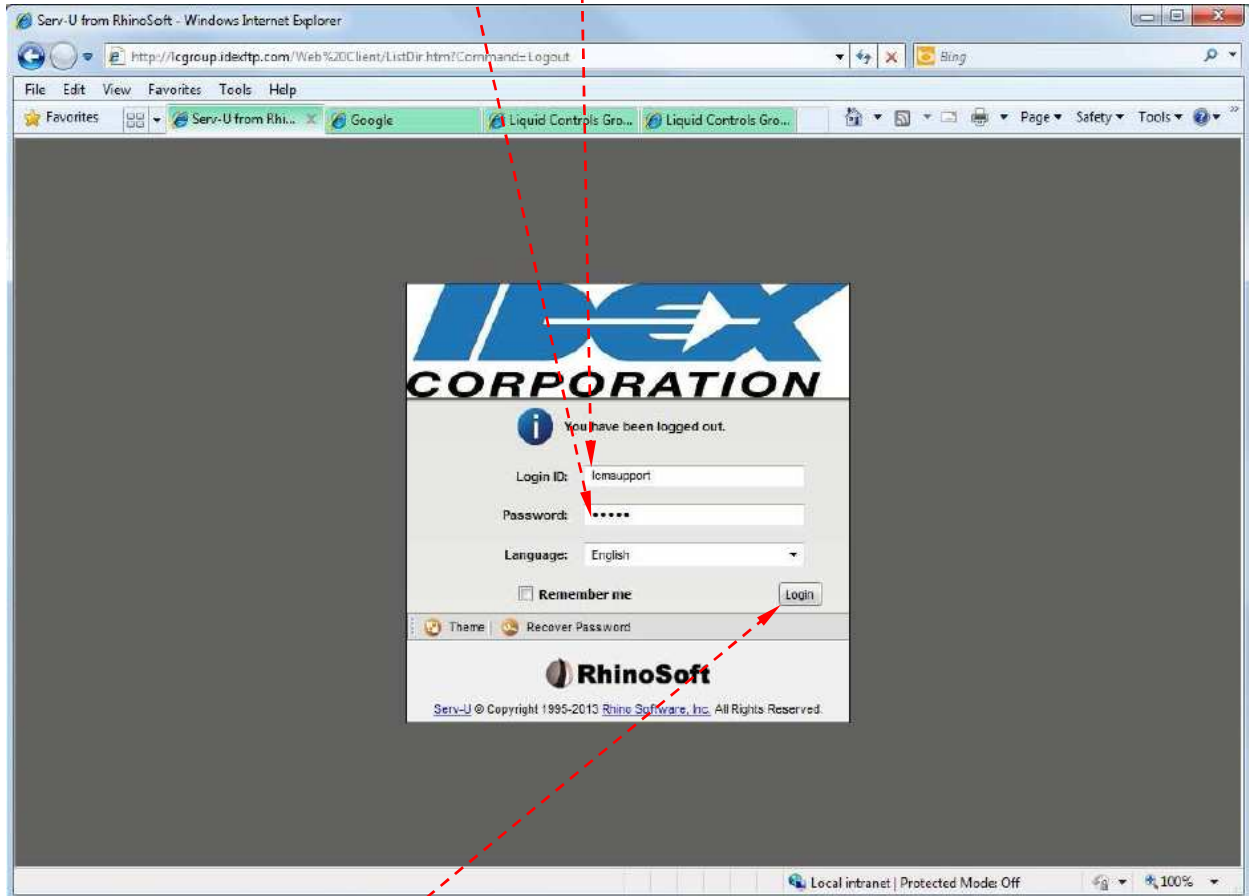
Sales: Service:

Author: K. Kious

Page 2 of 6

INTENTIONALLY LEFT BLANK

5. Type in the Login ID – **lcmsupport** (all lower case)
6. Type in the Password – **LF7VX** (all upper case)



7. Depress the **Login** button in the lower left corner of the pop-up window.

INTENTIONALLY LEFT BLANK

DOWNLOAD INSTRUCTION for EZCOMMAND LITE

Customer Service Departmental Document
Liquid Controls, Lake Bluff

Document #: 1.01

Rev: 1.0

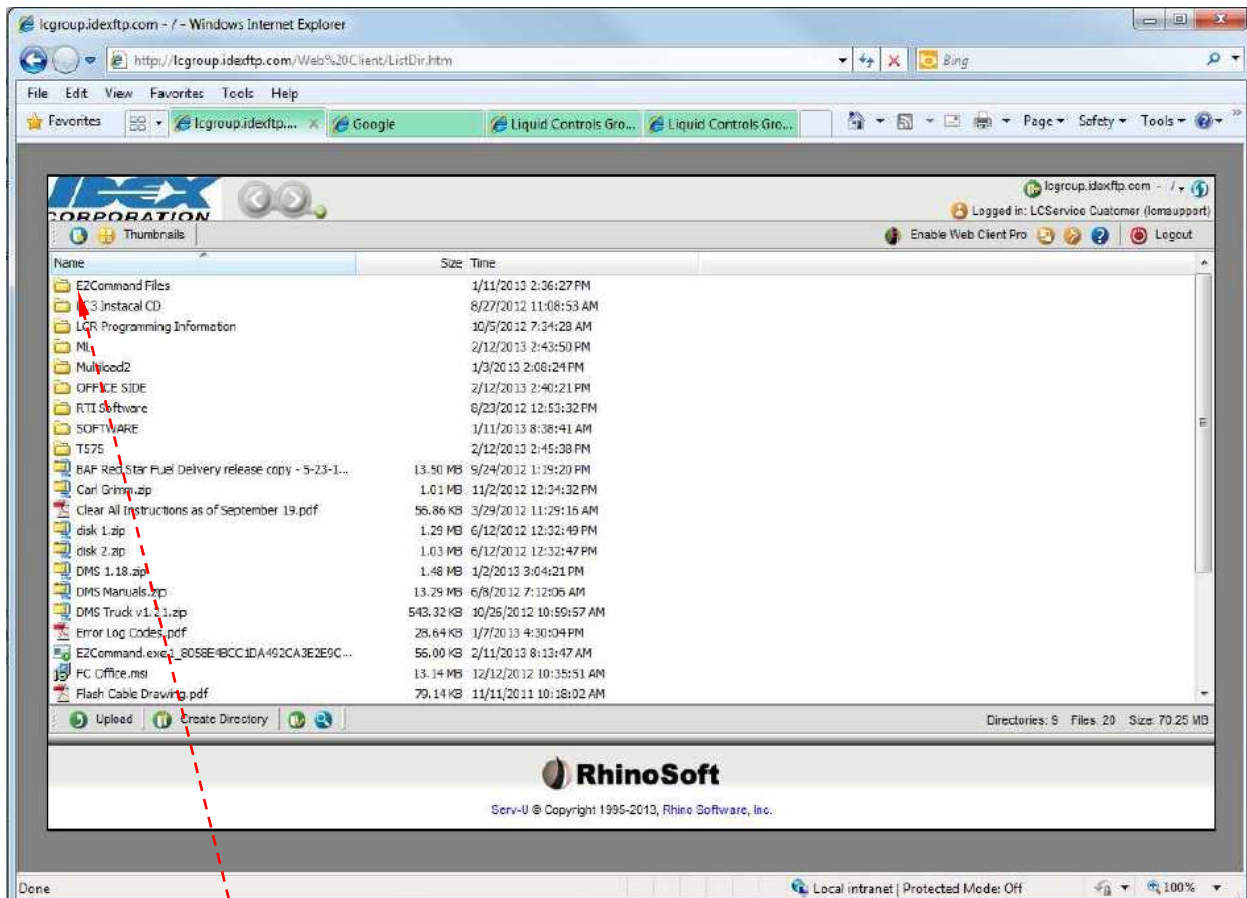
Date: 02/11/13

Sales: Service:

Author: K. Kious

Page 3 of 6

- The following window will pop-up (if the Login ID and Password are entered correctly).



- Select **EZCommand Files** folder and double click with left mouse button. This will open the following window:



DOWNLOAD INSTRUCTION for EZCOMMAND LITE

Document #: 1.01

Rev: 1.0

Customer Service Departmental Document
Liquid Controls, Lake Bluff

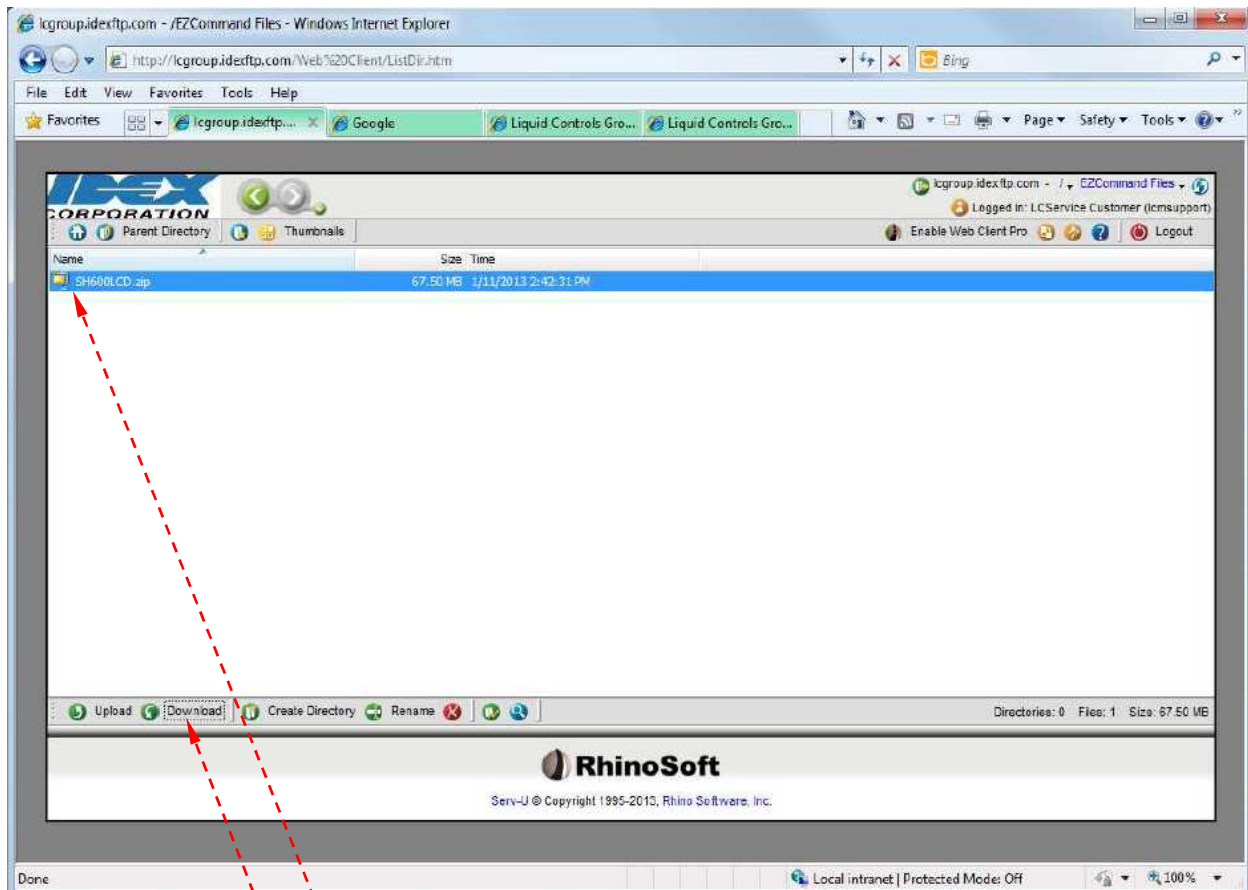
Date: 02/11/13

Sales: Service:

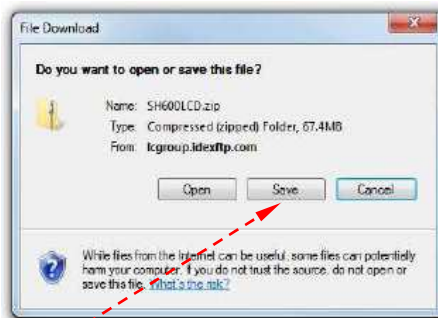
Author: K. Kious

Page 4 of 6

INTENTIONALLY LEFT BLANK



10. Highlight the **SH600LCD.zip** file in this folder. Note: This is always the latest version of the 'EZCommand Lite' program.
11. Select the **Download** button and the following pop-up window will appear in the middle of the above window.



DOWNLOAD INSTRUCTION for EZCOMMAND LITE

Document #: 1.01

Rev: 1.0

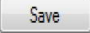
Customer Service Departmental Document
 Liquid Controls, Lake Bluff

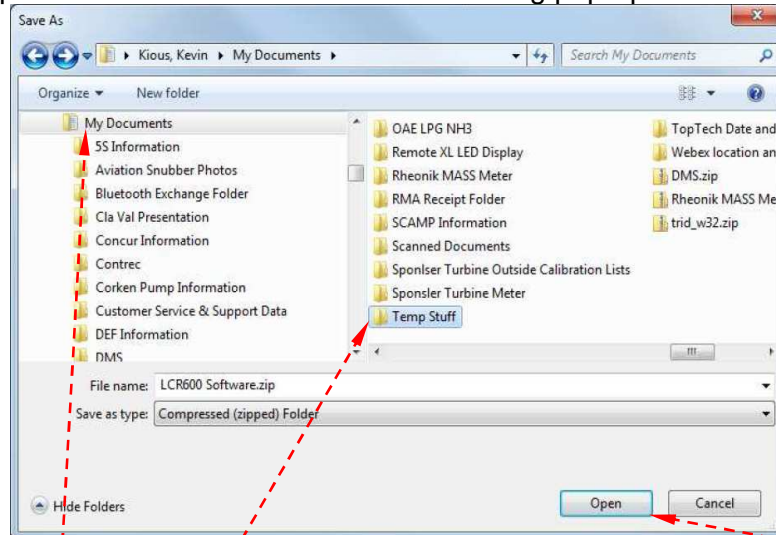
Date: 02/11/13


Sales: Service:

Author: K. Kious

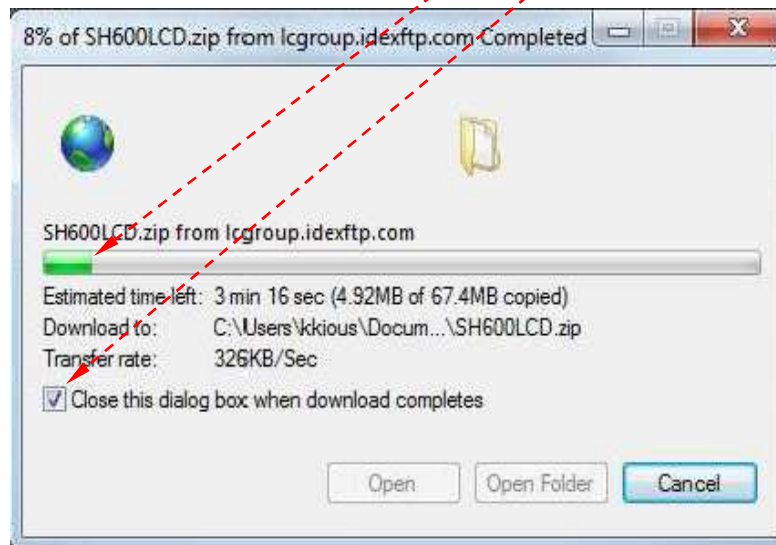
Page 5 of 6

12. Depress the  button and the following pop-up window will appear.



13. Select the location where you want to save the download file and depress the  button; NOTE for this instruction, the SH600LCD.zip file will be loaded into 'My Documents/Temp Stuff' folder.

14. The following pop-up window will indicate the progress of the download. Allow the program to complete the download. By selecting , to enable 'Close this dialog box...', the pop-up window will close when the program download is complete.





DOWNLOAD INSTRUCTION for EZCOMMAND LITE

Document #: 1.01

Rev: 1.0

Customer Service Departmental Document
Liquid Controls, Lake Bluff

Date: 02/11/13

Sales: Service:

Author: K. Kious

Page 6 of 6

15. You have completed the download of **SH600LCD.zip**, 'EZCommand Lite'.

Form: N/A