



EXTRACT INSTRUCTION for EZCOMMAND LITE

Customer Service Departmental Document
Liquid Controls, Lake Bluff

Document #: 1.02

Rev: 1.0

Date: 11/02/13

Sales: Service:

Author: K. Kious

Page 1 of 8


Policy: N/A

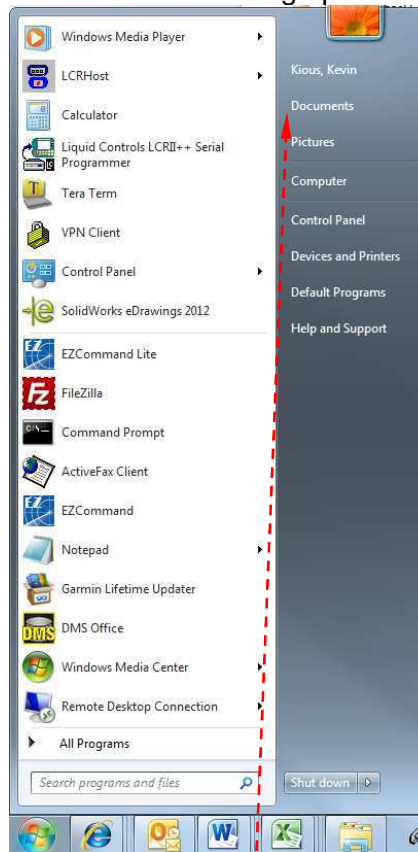
Procedure: N/A

Work Instruction:

1. Extract LectroCount EZCommand Lite Program

A. Complete the 'DOWNLOAD Work Instruction 1.01' for EZCOMMAND LITE.

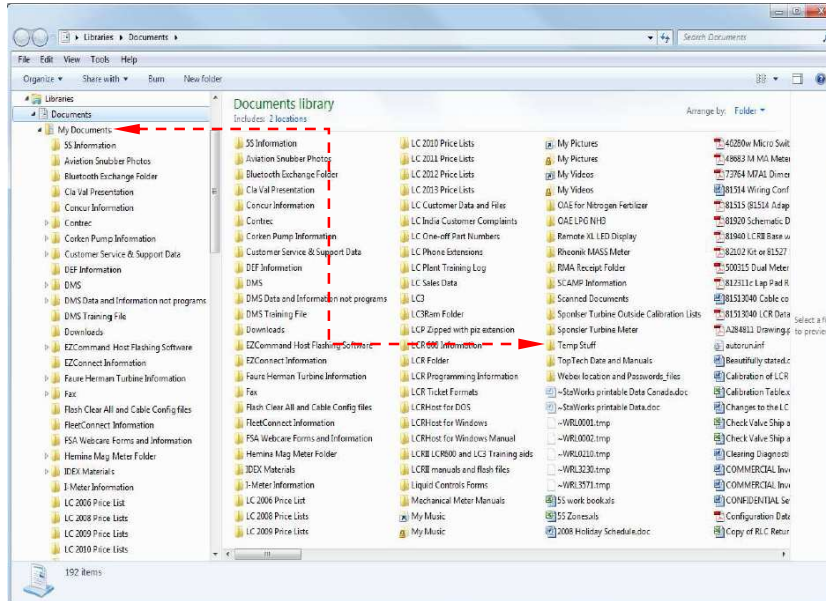
B. Using your Mouse pointer, move the pointer to the START  button and click the left button of your mouse which will bring up the following pop-up window.



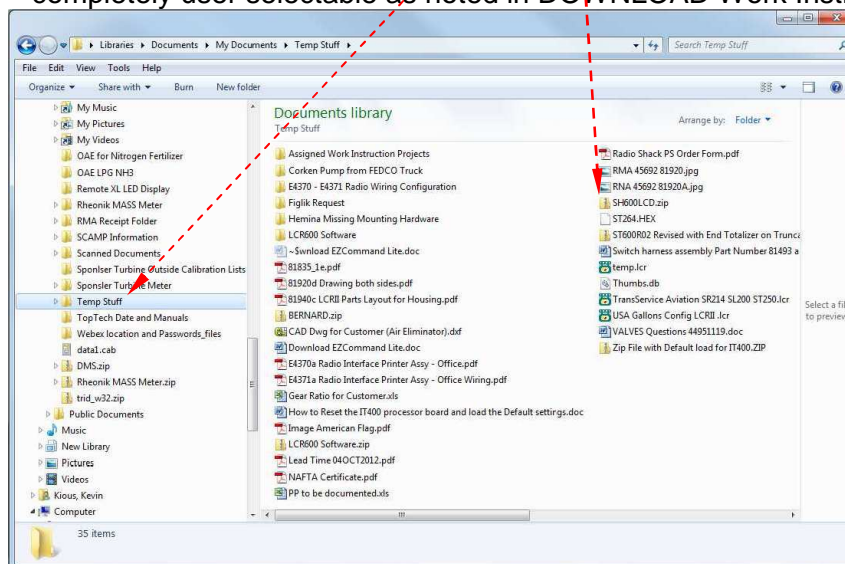
C. Using your Mouse pointer, select **Documents** from this pop-up window. Note: Depending on the version of Windows being used the above window may appear different, however, the Documents pointer should be displayed on the window.

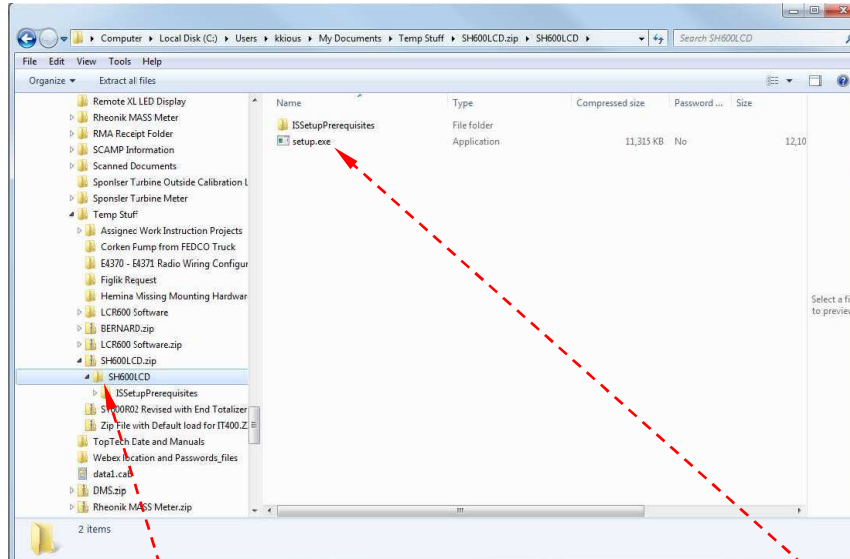
INTENTIONALLY LEFT BLANK

D. The Window shown below will appear on your screen. Depending on the version of Windows being used the above window may appear different, however, the information on the Documents window should be similar.

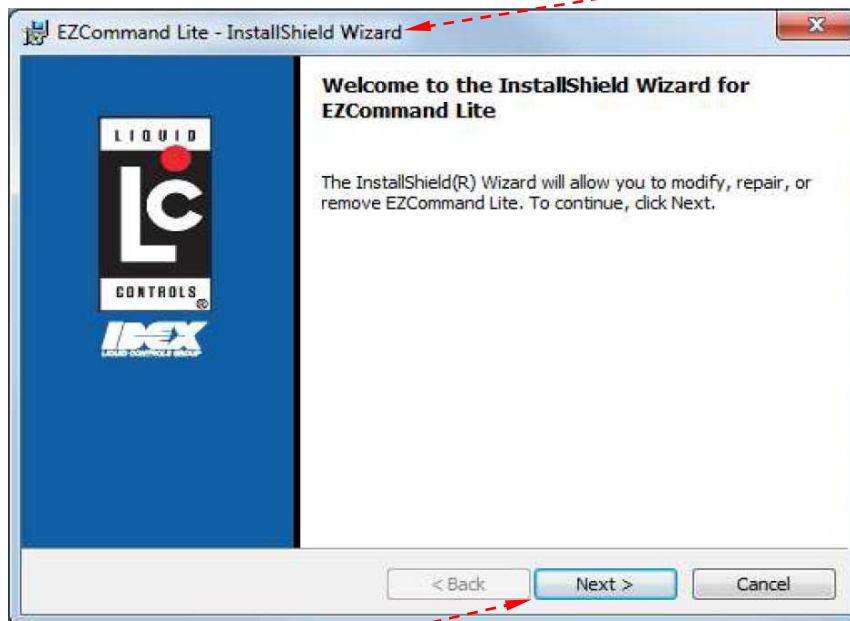


E. Locate the downloaded file **SH600LCD.zip** – in this instance, the file was downloaded into a folder titled **'My Documents/TEMP STUFF'**. This location is completely user selectable as noted in DOWNLOAD Work Instruction 1.01.





- F. Open the **SH600LCD.zip** folder and select and execute the **"Setup.exe"** file by double clicking the left mouse button on the file name. This should bring up the **'InstallShield Wizard'** pop-up window.



- G. Depress the **Next >** button on the Wizard Screen above and follow the instructions to extract the program properly.
- H. You have successfully extracted the EZCommand Lite program. Proceed to step 2 of this work instruction, see next page.

EXTRACT INSTRUCTION for EZCOMMAND LITE

Customer Service Departmental Document
Liquid Controls, Lake Bluff

Document #: 1.02


Rev: 1.0

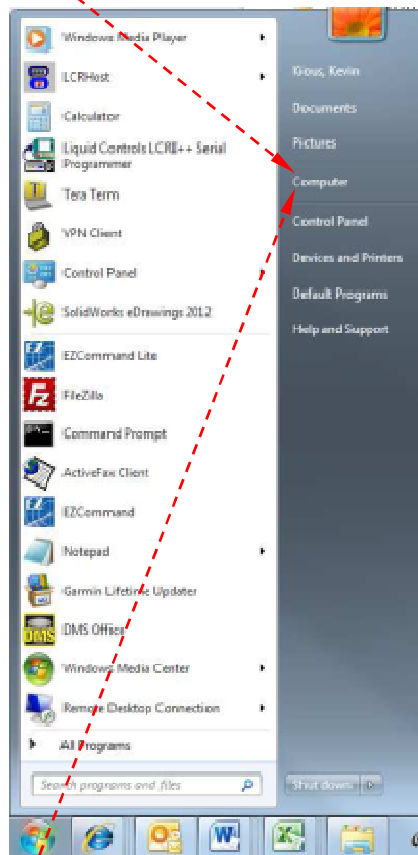
Date: 11/02/13

Sales: Service:

Author: K. Kious

Page 4 of 8

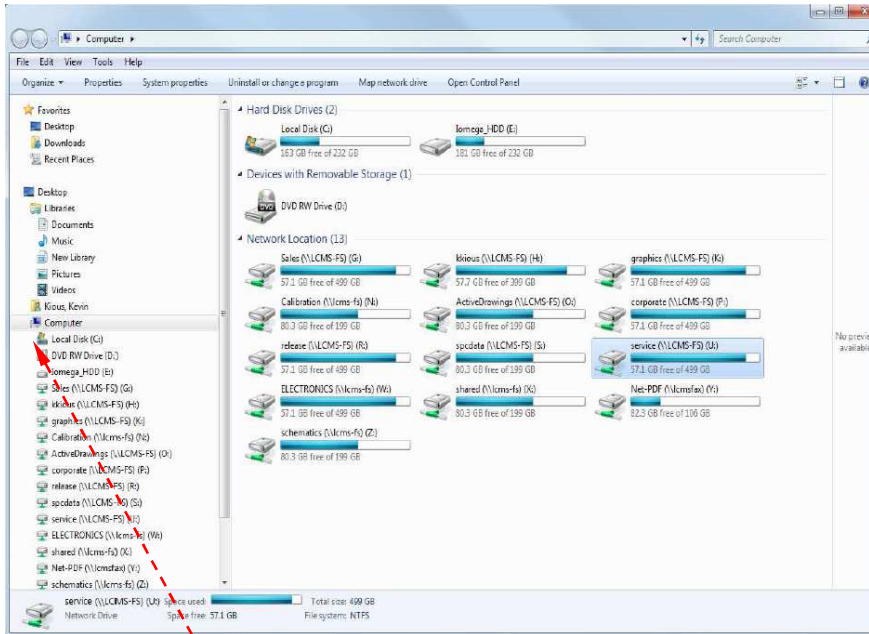
2. Prior to opening the EZCommand Lite program you will need to locate and execute a program that EZCommand Lite uses. This program is located in the directory that was setup by the extraction process completed previously.
 - A. Using your Mouse pointer, move the pointer to the  button and click the left button of your mouse which will bring up the following pop-up window.
 - B. Locate the **Computer** tab in the pop-up window.





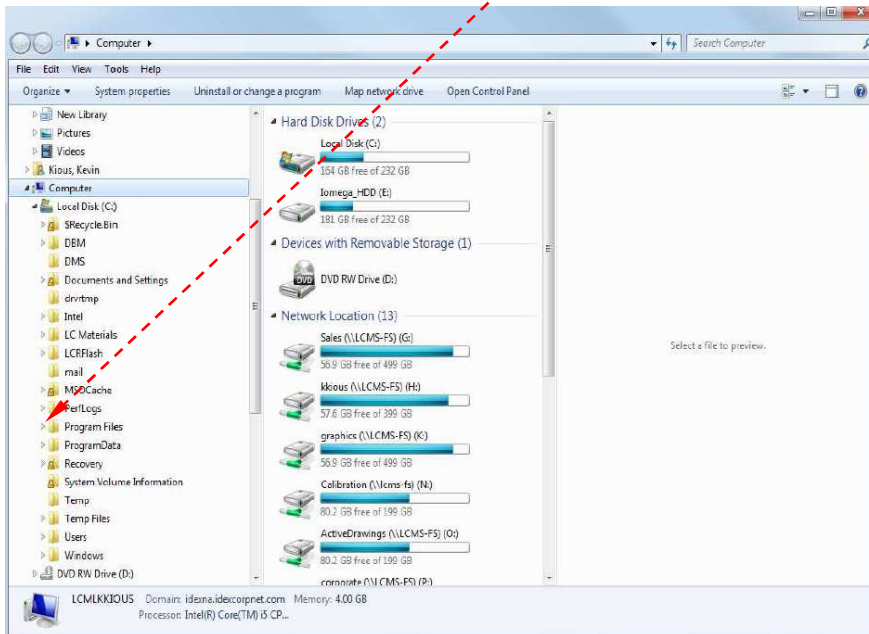
- C. Select the **Computer** tab and the following window will pop-up, see next page.

INTENTIONALLY LEFT BLANK

Customer Service Departmental Document
Liquid Controls, Lake Bluff



D. Locate the 'Local Disk (C)' in the directory. Move your mouse pointer to the  on the left side of the folder. Click with the left mouse button to open and display the contents of the folder, see below. Locate 'Program Files' in the directory and move your mouse pointer to the  on the left side of the folder. Click with the left mouse button to open and display the contents of the folder, see on next page.





EXTRACT INSTRUCTION for EZCOMMAND LITE

Customer Service Departmental Document
Liquid Controls, Lake Bluff

Document #: 1.02

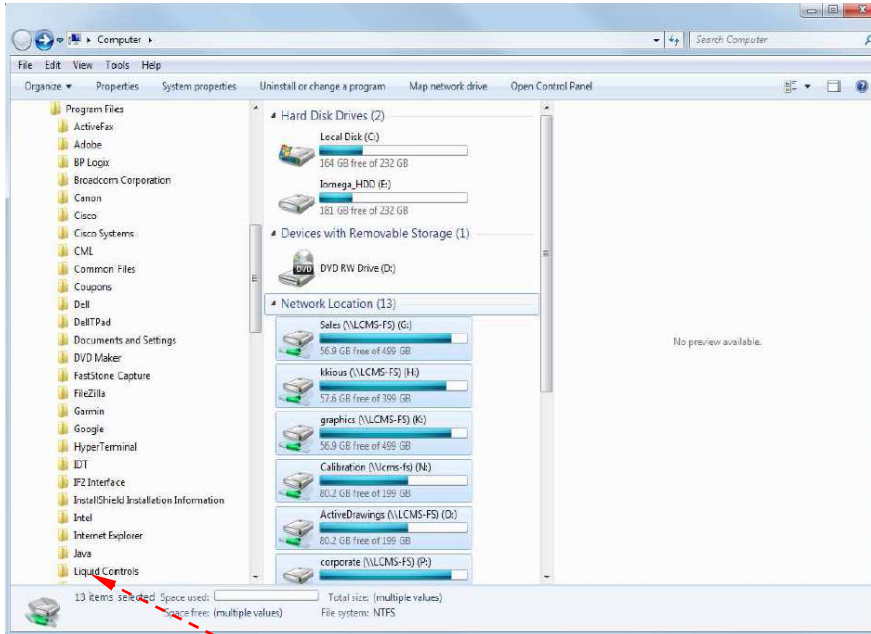
Rev: 1.0

Date: 11/02/13

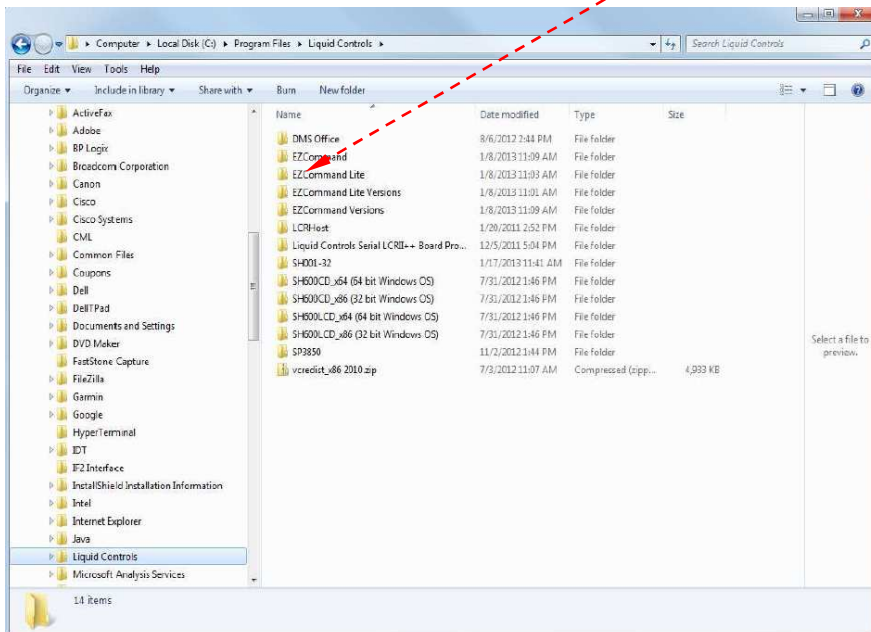
Sales: Service:

Author: K. Kious

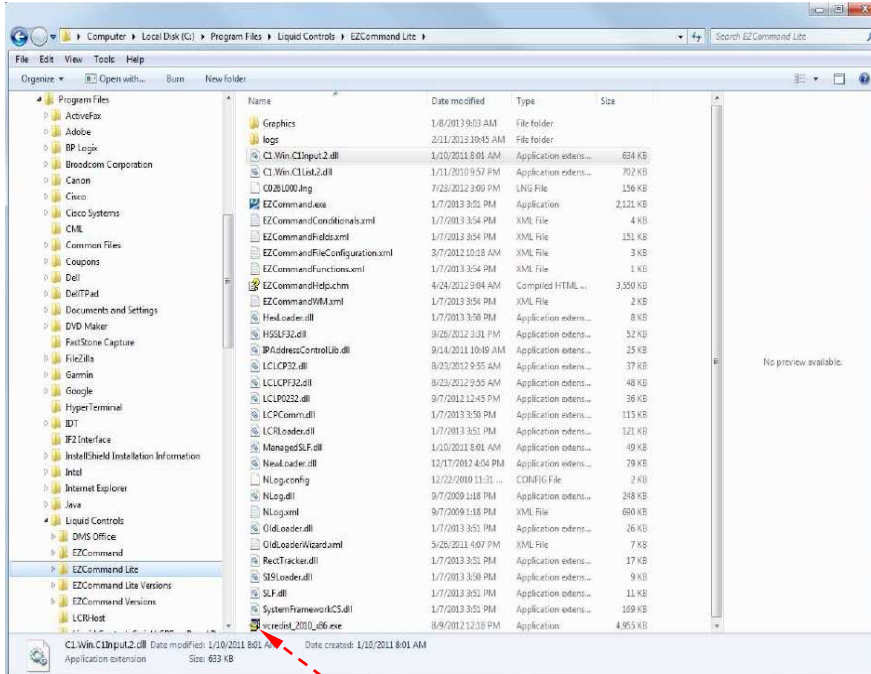
Page 6 of 8



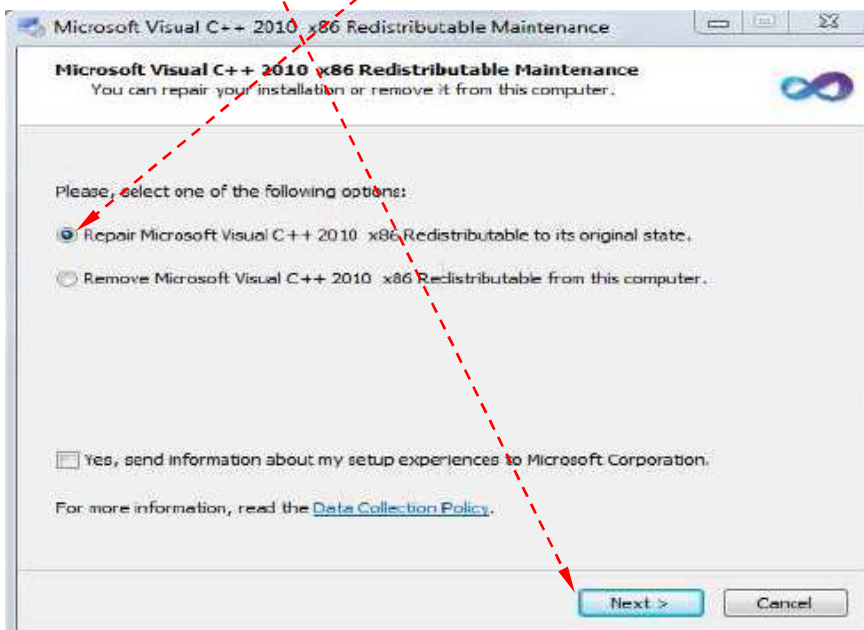
- E. Locate the folder 'Liquid Controls'. Move your mouse pointer to the folder and click with the left mouse button to open and display the contents of the folder on the right side of the window, see below. Locate the 'EZCommand Lite' folder. Move your mouse pointer to the folder and click with the left mouse button to open and display the contents of the folder, see below on next page.



Customer Service Departmental Document
Liquid Controls, Lake Bluff



F. Locate the program **vcredist_2010_x86.exe** located in the **'EZCommand Lite'** folder. Move your mouse pointer to the executable program and double click with the left mouse button to start the program. A pop-up window, see below, should come up on the display. Verify the **'Repair Microsoft...'** Option is selected. Once this is done, select **Next >** and follow the instructions to load this program.



EXTRACT INSTRUCTION for EZCOMMAND LITE

Customer Service Departmental Document
Liquid Controls, Lake Bluff

Document #: 1.02

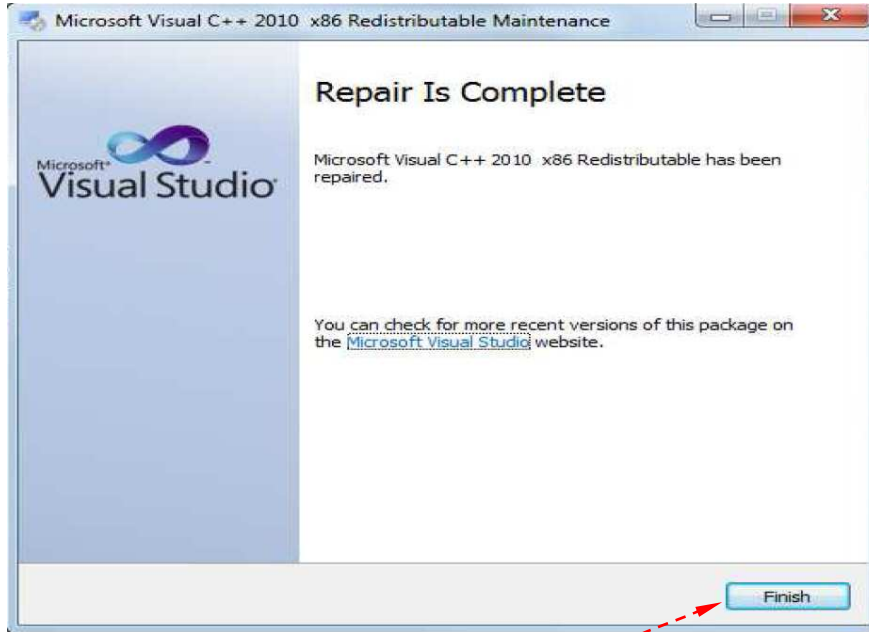
Rev: 1.0


Date: 11/02/13

Sales: Service:

Author: K. Kious

Page 8 of 8



- G. The above pop-up window should be displayed when the program has been loaded properly. Select the  button to close the window. At this point the computer should be shut down and rebooted.
- H. You have successfully extracted EZCommand Lite and are ready to setup the program for operation. Use Setup Instruction for EZCommand Lite Work Instruction 1.03 to setup the program.

Form: N/A