



SETUP INSTRUCTION for EZCOMMAND

Document #: 1.03

Rev: 1.0

Date: 10/12/12

Sales: Service:

Author: K. Kious


Page 1 of 5

Customer Service Departmental Document
Liquid Controls, Lake Bluff

Policy: N/A

Procedure: N/A

Work Instruction: Setup LectroCount EZCommand Lite

1. Locate the  shortcut Icon on your desk top. Note the extraction procedure for the EZCommand Lite program will generate this Icon and label it 'EZCommand Lite'.



- A. Select the  Icon to begin the program, see next page.

INTENTIONALLY LEFT BLANK

SETUP INSTRUCTION for EZCOMMAND

Customer Service Departmental Document
Liquid Controls, Lake Bluff

Document #: 1.03

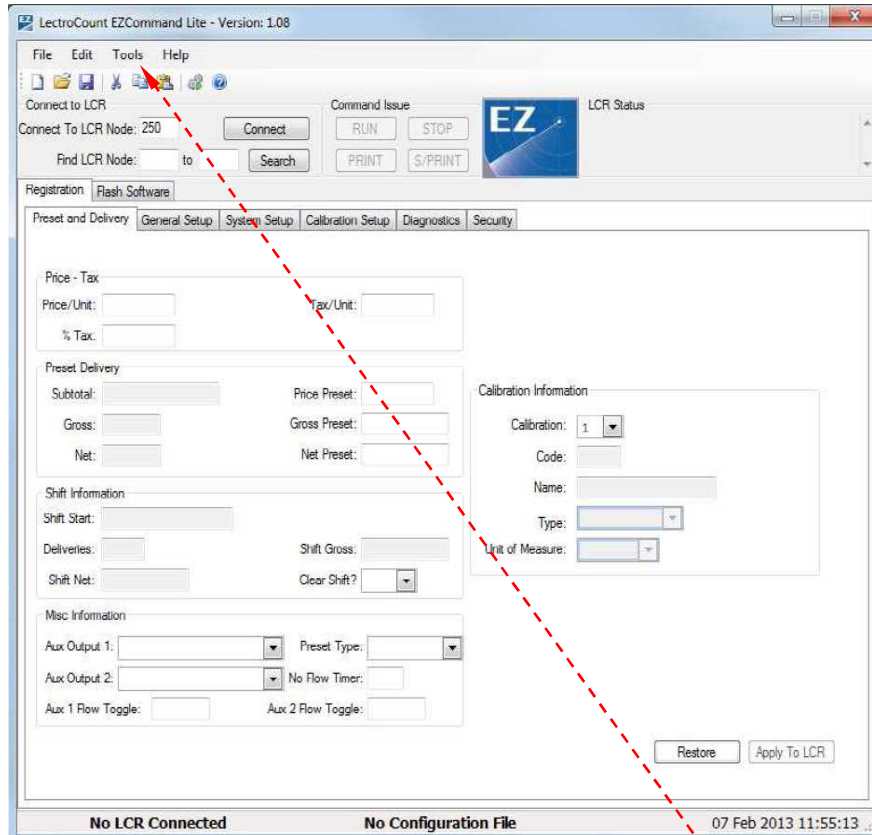
Rev: 1.0

Date: 10/12/12

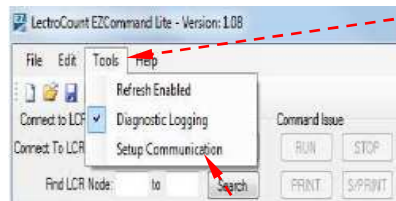
Sales: Service:

Author: K. Kious

Page 2 of 5



- B. To program the 'Communication Setup', select the **Tools** Tab located at the top of the program window. This will bring up a drop down window, see inset below.



- C. Select the **'Setup Communications'** option from the drop down window. This will bring up a pop-up window, see next page.

SETUP INSTRUCTION for EZCOMMAND

Customer Service Departmental Document
 Liquid Controls, Lake Bluff

Document #: 1.03

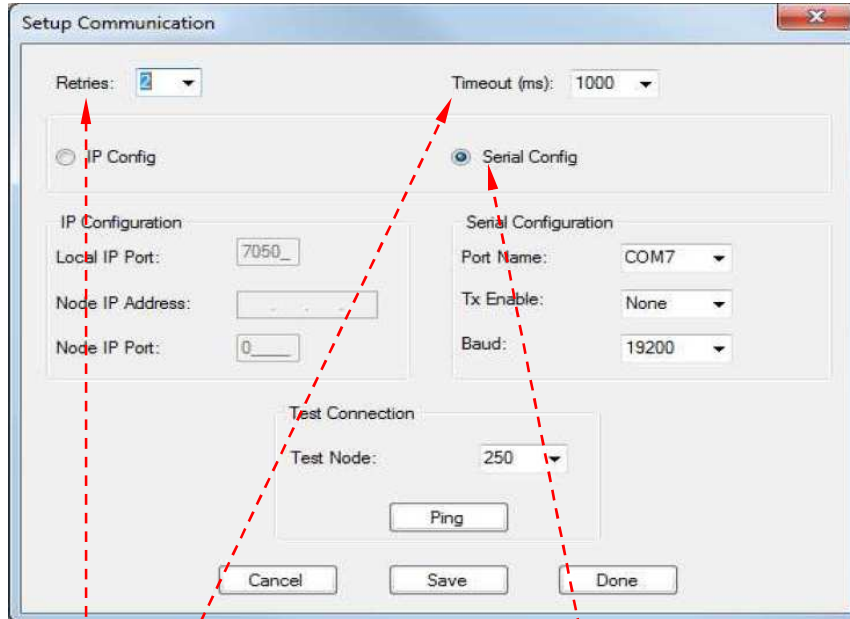
Rev: 1.0

Date: 10/12/12

Sales: Service:

Author: K. Kious

Page 3 of 5



D. Program the options in this window as follows:

1. Retries – selectable between 0 to 3 – default value 2.
2. Timeout (ms) – selectable from 100 to 1000 in 100 (ms) intervals – default value 1000.
3. Configuration – selectable 'IP Config' or 'Serial Config' - default value 'Serial Config'.
 - a. Port Name – COMx where 'x' is the port assigned by the computer for the Communication Port on the computer. If you do not know the COM port assigned to the Serial Port or USB to Serial cable on your computer, perform Work Instruction 1.04.

INTENTIONALLY LEFT BLANK

SETUP INSTRUCTION for EZCOMMAND

Customer Service Departmental Document
 Liquid Controls, Lake Bluff

Document #: 1.03

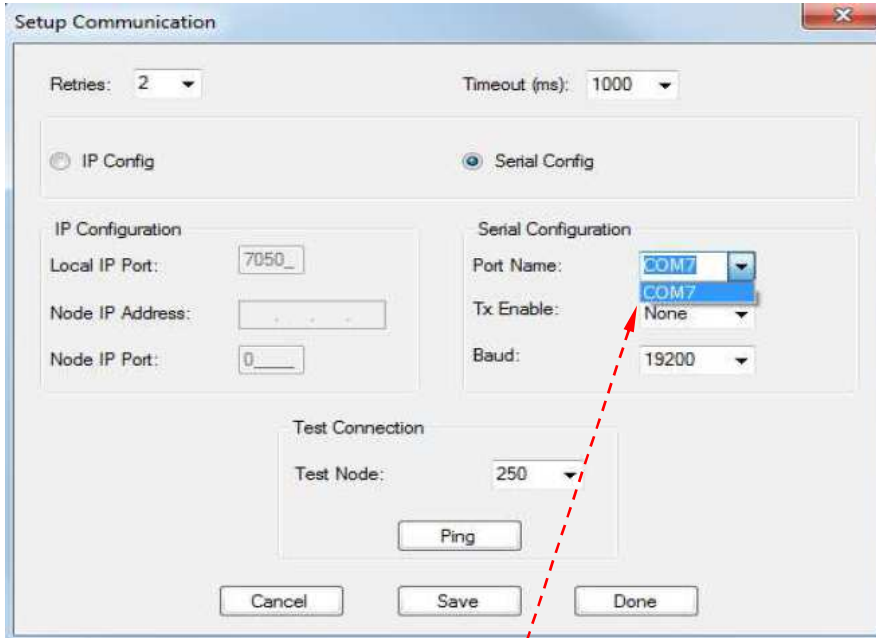
Rev: 1.0

Date: 10/12/12

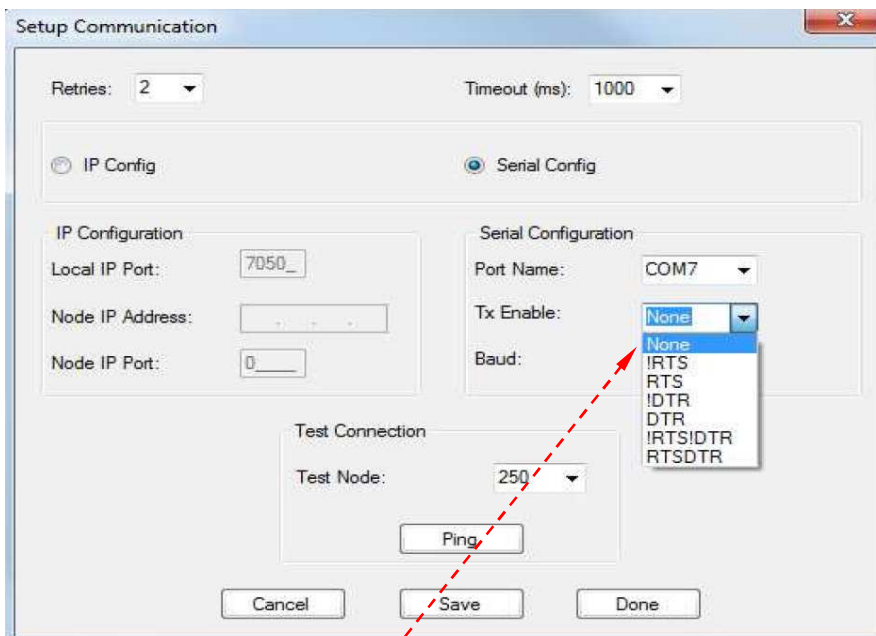
Sales: Service:

Author: K. Kious

Page 4 of 5



b. From the information obtained from the Work Instruction 1.04, select the COMx port. In this example **COM7** is highlighted and selected.



c. Tx Enable - Select **None** from the drop down window.

SETUP INSTRUCTION for EZCOMMAND

Customer Service Departmental Document
Liquid Controls, Lake Bluff

Document #: 1.03

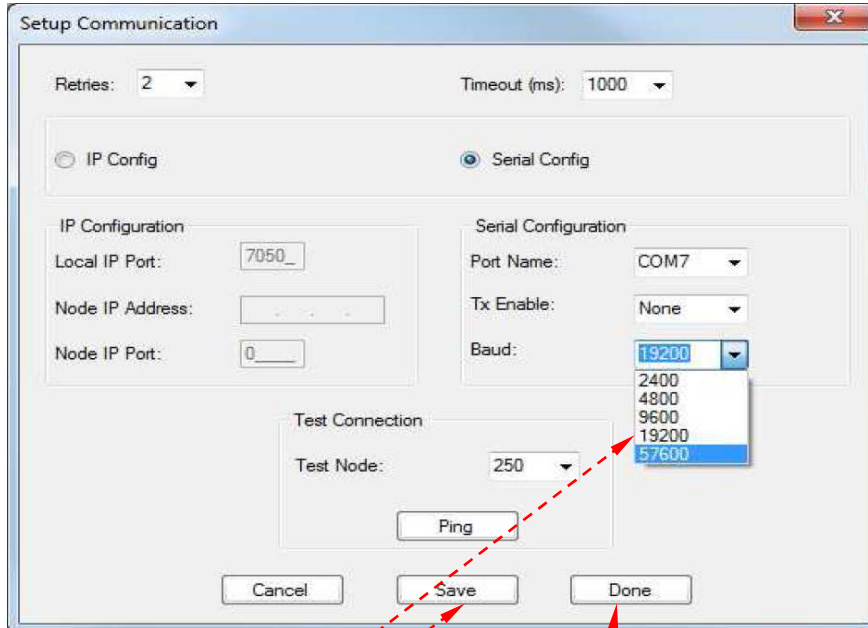
Rev: 1.0

Date: 10/12/12

Sales: Service:

Author: K. Kious

Page 5 of 5



2. Baud – Select **19200** from the drop-down window.

3. Select the button to save this configuration.

4. When this is complete, select to close this window.

E. The configuration of the EZCommand Lite program is complete.

Form: N/A