



DETERMINE COMxx PORT EZCOMMAND LITE

Customer Service Departmental Document
Liquid Controls, Lake Bluff

Document #: 1.04

Rev: 1.0

Date: 10/12/12

Sales: Service:

Author: K. Kious

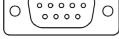
Page 1 of 4

Policy: N/A

Procedure: N/A

Work Instruction: Determine Communication Port

1. EZCommand Lite communicates via Serial Port. This is defined in the setup options menu as **Port Name – COMx** where 'x' is the port assigned by the computer for the Communication Port on the computer.
2. To determine what communications port the computer has assigned you must know which of the following reflects your computer.

A. Older computers have one (1) DB9 Serial Port output  that is traditionally configured as COM1.

B. Newer computers have USB port(s)  in place of the Serial Port noted in A. In order to communicate between the USB port on the computer and the Serial Input on the LCR11, a USB to Serial Cable must be installed on your computer.

NOTE: The USB to Serial Adapter Cable that is used with great success is the 'TRIPP LITE model U209-000-R 17 'USB to Serial Adapter', see inset photo.



These cable interfaces are 'Plug n' Play' technology so when the **USB terminal end** of the cable is inserted into a USB port on the computer. The computer will install the drivers and assign the USB to Serial cable a COMx address. To determine this COMx address proceed with the following steps.

INTENTIONALLY LEFT BLANK

DETERMINE COMxx PORT EZCOMMAND LITE

Customer Service Departmental Document
Liquid Controls, Lake Bluff

Document #: 1.04


Rev: 1.0

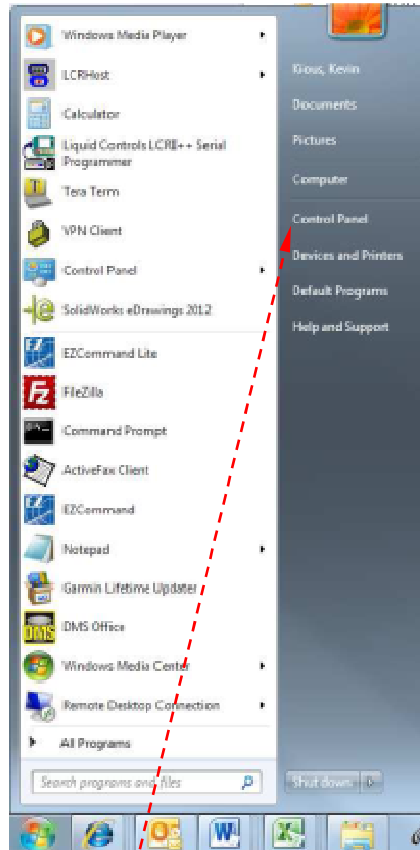
Date: 10/12/12

Sales: Service:

Author: K. Kious

Page 2 of 4

- I. From the Start Task Bar depress the  button. A pop-up will appear on the computer, see below.



- II. Select the **'Control Panel'** option from the menu. The following pop-up window will appear, see next page.

INTENTIONALLY LEFT BLANK

DETERMINE COMxx PORT EZCOMMAND LITE

Customer Service Departmental Document
Liquid Controls, Lake Bluff

Document #: 1.04

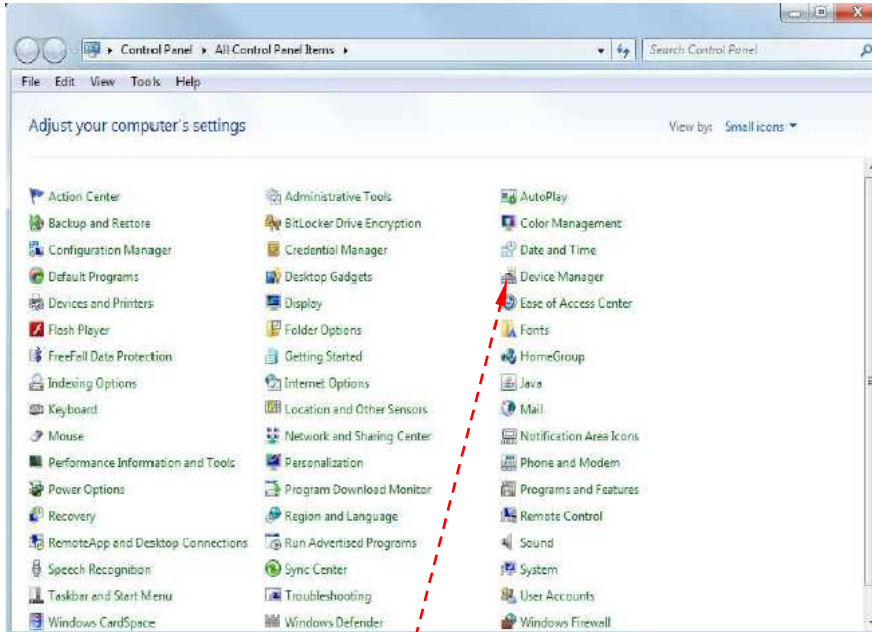
Rev: 1.0

Date: 10/12/12

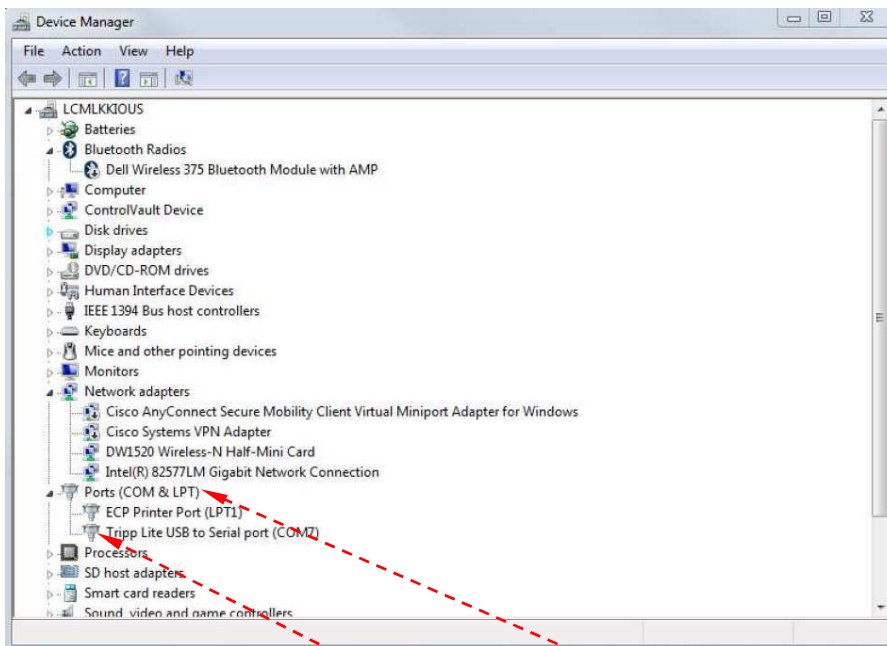
Sales: Service:

Author: K. Kious

Page 3 of 4



II. Find and select the 'Device Manager' option in this window. This will bring up the Device Manager window, see below.



III In the menu locate and select 'Ports (COM & LPT)'. When the USB to Serial device is connected, it should be listed by its name and the communication port assigned to it. In this example it is (COM7).



DETERMINE COMxx PORT EZCOMMAND LITE

Customer Service Departmental Document
Liquid Controls, Lake Bluff

Document #: 1.04

Rev: 1.0

Date: 10/12/12

Sales: Service:

Author: K. Kious

Page 4 of 4

- C. From the information obtained from the Device Manager, return to the EZCommand Lite Setup Communications window and proceed to program the communications options for the program.

Form: N/A